

Ableton Live 10 and 11 Script - Twister Selected Track WinPC

Installation Guide

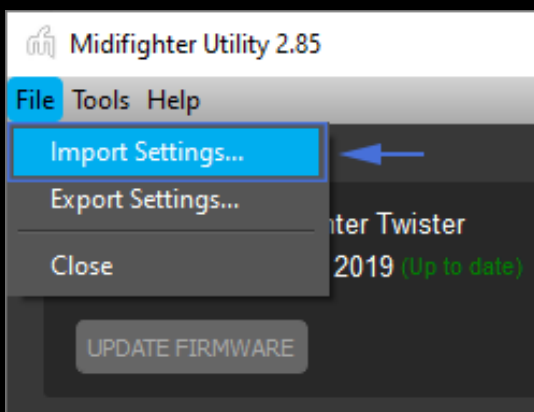
Configuring Midfighter Settings:

1. Download newest version of Midfighter Utility from the following link and install it on your PC.

Midfighter Setup guide: <https://djtechtools.com/midi-fighter-setup/>

2. Start MF Utility and click on “File” then navigate to the place on your Mac where the midi fighter settings file (.mfs) is saved to open it.

MF Utility → File → Import Settings → “Utility Settings - css_twister_selected_track_live”



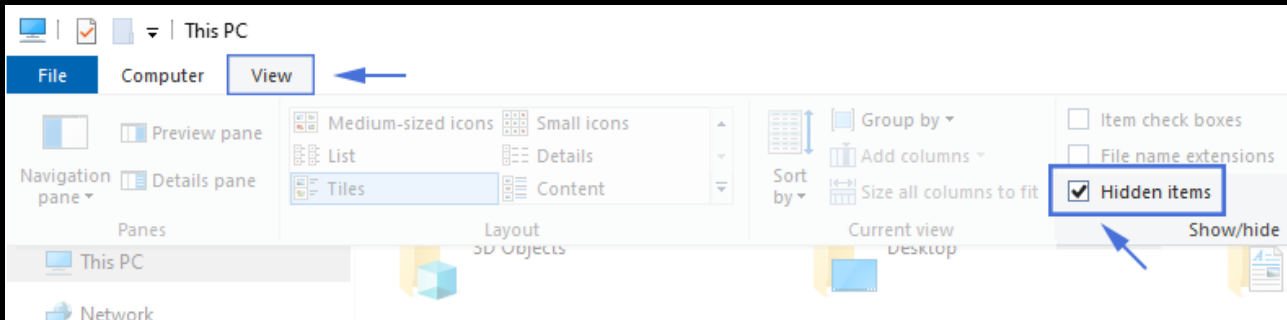
3. Click on “Send to Midfighter” to apply new settings to the device firmware.



4. Be sure to close MF Utility each time before starting Ableton. Unlike Mac machines, Windows based machines cannot share a single MIDI Controller Port across a multiple applications.

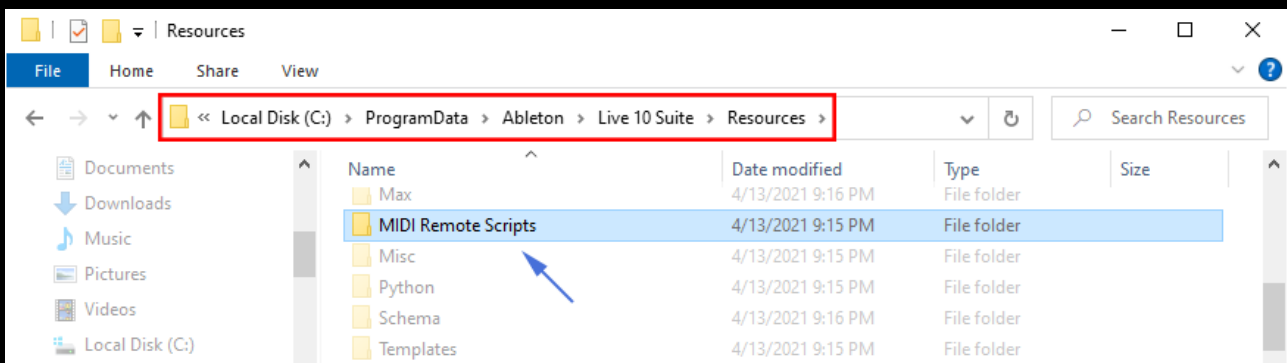
Configure Ableton Script and Settings.

1. Open Windows Explorer and click on “View” to open additional folder options. Make sure that “Hidden items” box is ticked - that will show the Ableton folder which is hidden by default.



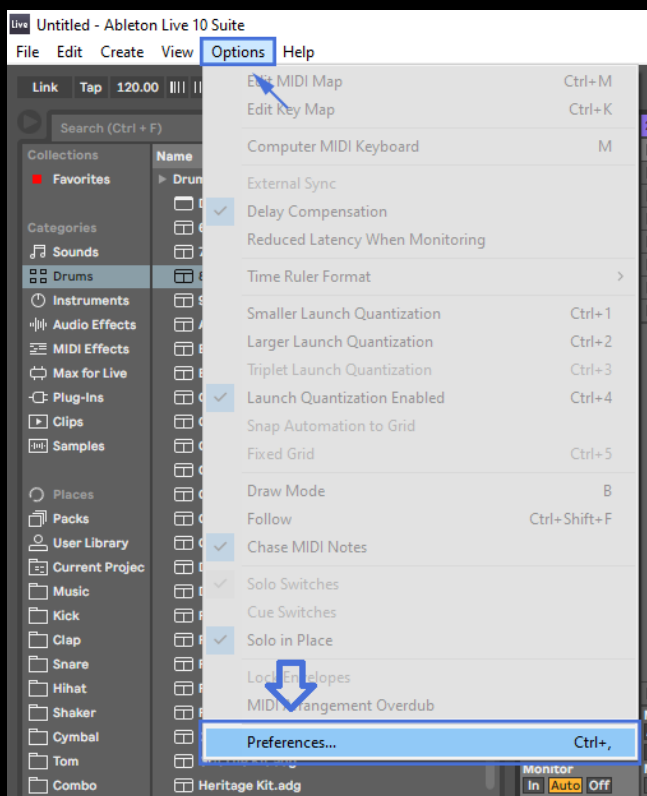
2. Copy or Move provided “css_twister_selected_track_live” into the “MIDI Remote Scripts” folder for the respective version of Ableton Live that you use.

Local Disc (C:) —> ProgramData —> Ableton —> Live 10 or 11 —> Resources —> MIDI Remote Scripts



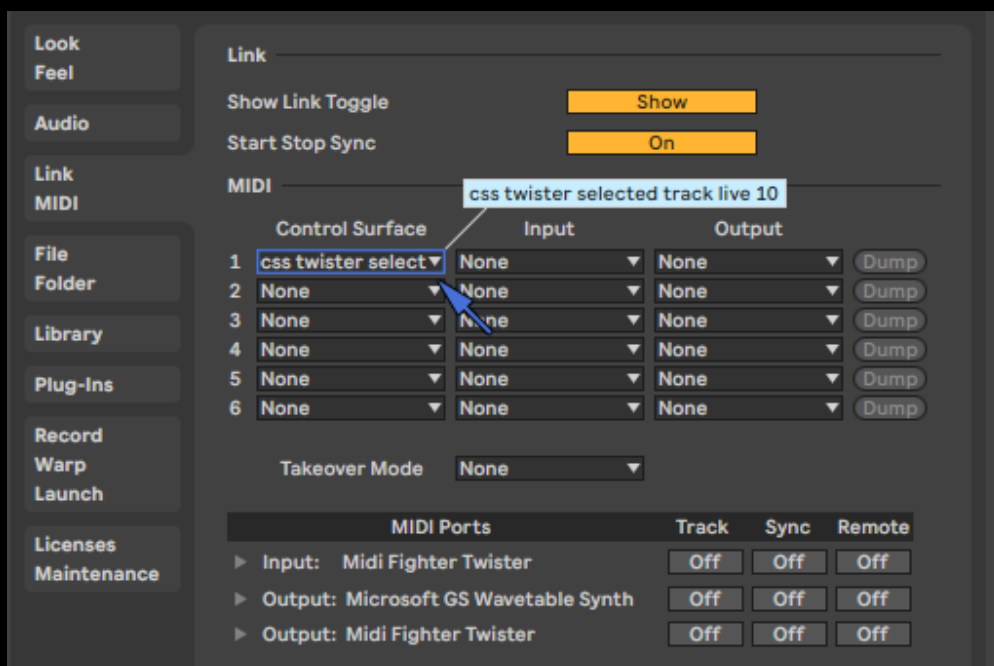
3. Start Ableton and open Preferences.

Ableton —> Options —> Preferences

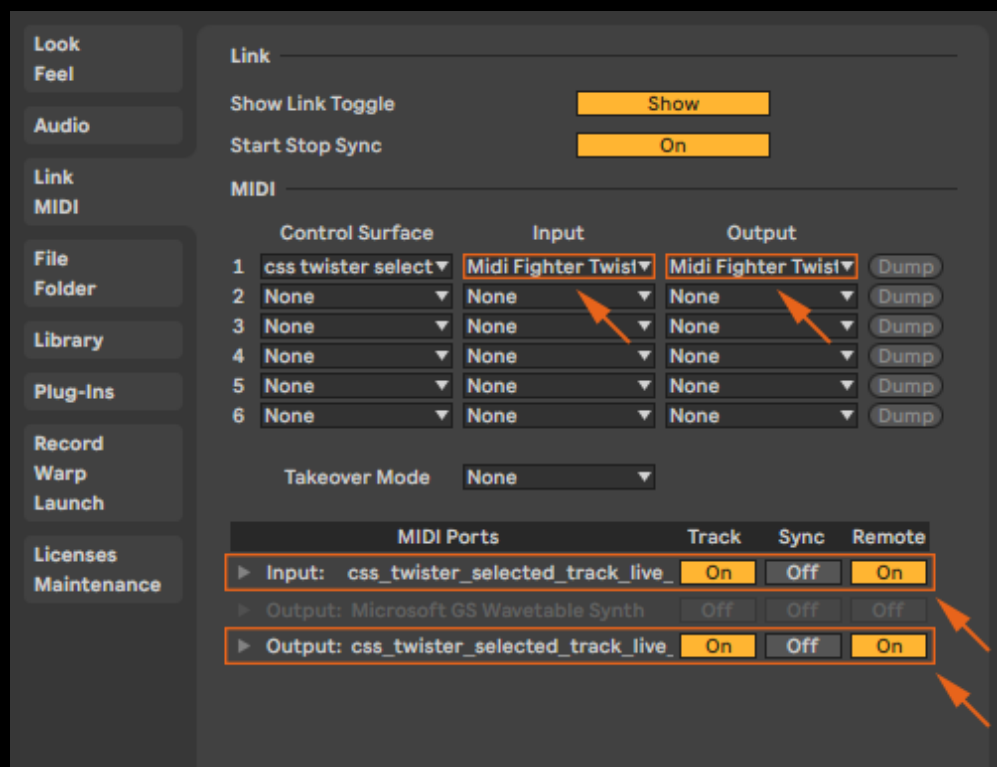


4. Click on MIDI tab and select “css_twister_selected_track_live” script from the drop-down menu. Available is Live 10 and Live 11 option.

Ableton supports up to 6 different remote scripts and for the purpose of this tutorial we will use ‘slot 1’ but feel free to configure any of those 6 slots. You can also select different Twister scripts in each slot and toggle between them by switching the Inputs/Outputs for the respective scripts.



5. In this final step, we will assign Input and Output controller (Midi Fighter Twister) for the script we just added and also enable “Track” and “Remote” for the same script at the “MIDI Ports” section.



For technical support feel free to submit a ticket on the following web page:

<https://djtechtools.com/contact/>